



# PRECISION + GAS REGULATOR

## Benefits

- Taste Uniformity
- Safety
- Minimize Waste
- Less Service Calls
- No Over / Under Counter Carbonation of Beverage

## Tamper Evident Conversion Kit (Included in Box)



**Tamper Evident  
Cover**



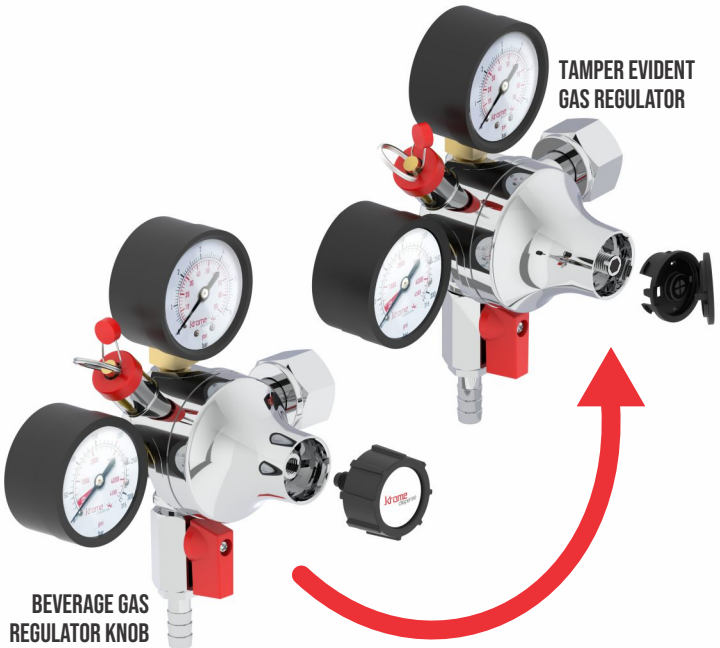
**Screw**



**Allen Key For  
Pressure Adjustment**

# HOW TO CONVERT BEVERAGE GAS REGULATOR KNOB INTO TAMPER EVIDENT GAS REGULATOR

( IF REQUIRED )



# INSTRUCTIONS ARE AS FOLLOWS

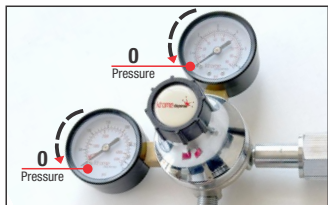


Fig: Image 1

2. Hold the cap firmly and **rotate the knob anti clockwise**..as shown in (Image 2)



Fig: Image 2



3. After rotating the adjustment knob to anti-clockwise **remove the adjustment Knob**..as shown in (Image 3)

Fig: Image 3

4. **Insert the screw** sharp side down into the regulator where the knob was removed..as shown in (Image 4)



Fig: Image 4



5. Use an Allen key clock wise to turn the screw and **adjust the desired pressure** as needed..as shown in (Image 5)

Fig: Image 5

6. After setting the pressure, **place the tamper-evident cap** securely over the screw..as shown in (Image 6)

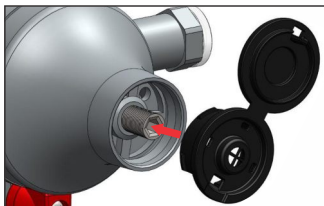


Fig: Image 6

## NOTE:

Once this has been set and if someone wants to change the pressure of the regulator, they have to break the tamper evident cap..as shown in (Image 7)

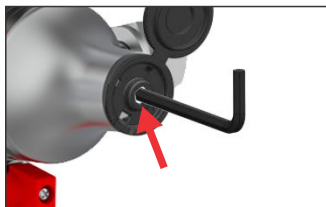


Fig: Image 7

HOW TO CONVERT  
(WATCH VIDEO)



Scan QR Code to watch

## Replacement Kit For Beverage Gas Regulator



### Part No.: C2898

Precision Plus Regulator  
Replacement Kit with  
Opening tool

- (1) Tamper Evident Lid
- (1) Diaphragm
- (1) Disassembly torque tool
- (1) Cartridge



### Part No.: C2898-L2

Precision Plus Regulator  
Replacement Kit with  
Tamper Evident Lid

- (1) Tamper Evident Lid
- (1) Diaphragm
- (1) Cartridge



### Part No.: C2898-L3

Precision Plus Regulator  
Replacement Kit

- (1) Diaphragm
- (1) Cartridge

**Note:** If the tamper-evident lid is broken or removed, please purchase a replacement to keep the regulator secure and safe to use.



### Part No.: C870.19x1

Precision Plus Regulator Tamper Evident Lid

- (1) Tamper Evident Lid

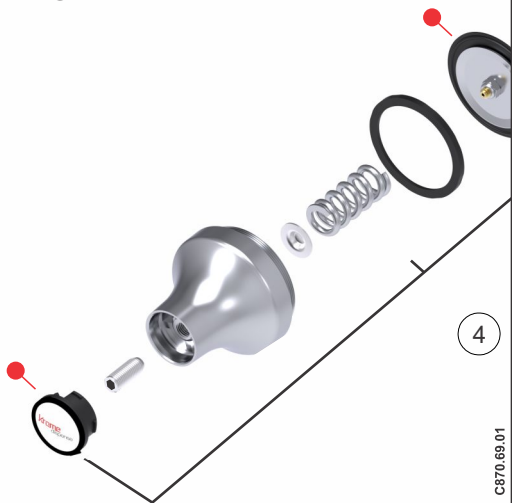
[SHOP NOW](#)



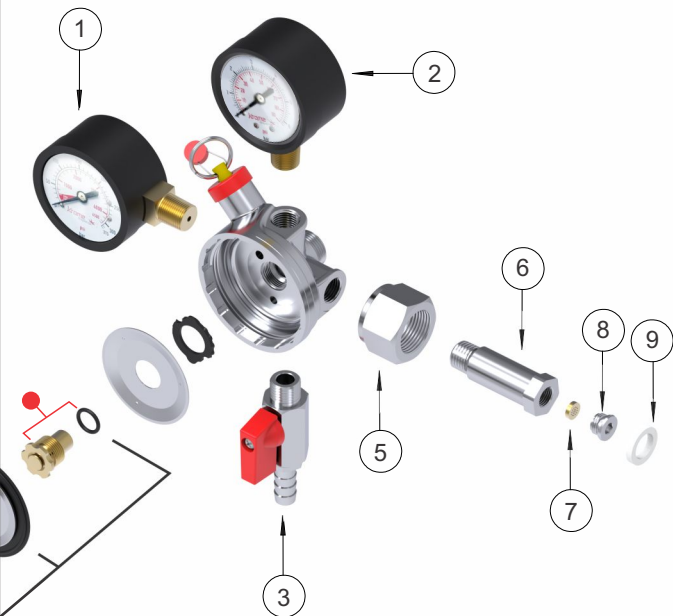
Visit Our Website To Find Distributor Near You

# Precision Plus Regulator

## INTERNAL PARTS DIAGRAM

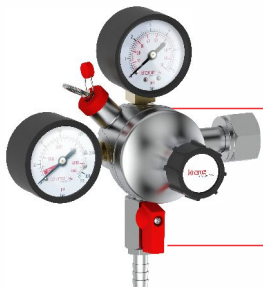


*Refer To Website For Part Numbers*



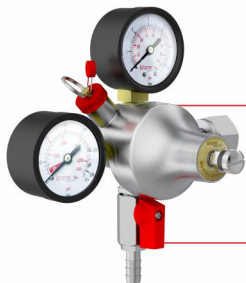
S.No.	Part Name
1	0-4500 PSI Gas Regulator Gauge
2	Co2 Gas Regulator Gauge upto 60 PSI
3	Aluminum Gas Distributor Check Valve
4	Repair Kit for Precision Plus Regulator
5	Co2 Nut-USA for Precision Plus Regulator
6	Co2 Inlet Stem
7	Inlet Co2 Filter
8	Inlet Seal Retaining Nut
9	Nylon Co2 Inlet Seal

# PRECISION + GAS REGULATOR OPTIONS



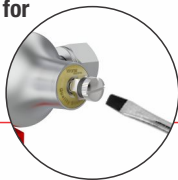
## C870 (Tamper Evident)

Easy-turn knob for tool-free pressure control with tamper-evident design for safe gas flow.



## C870-S0 (Screw Operated)

Screw-tight adjustment for easy, secure control.



**PREMIUM QUALITY**  
FOR PERFECT POUR