

Waste Valve Installation Manual



C8481 - Ball Waste Valve With Flat Strainer
C8482 - Ball waste valve with locking basket strainer

C8101
Face Strainer for 3-1/2"
Waste Drain



C8100
Face Flange for 3-1/2"
Waste Drain



C8102.03
Waste Drain Gasket



C8481.05
Waste Valve Retaining Nut
and Teflon Seal Sub
Assembly



C8481.02
Ball Waste Valve



C8481.01
Flat Strainer Body



C1945.02
Screw Cheese Head
M4x12



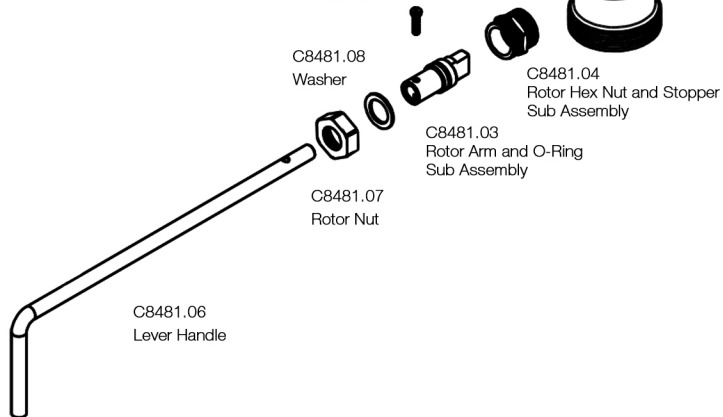
C8481.08
Washer



C8481.04
Rotor Hex Nut and Stopper
Sub Assembly

C8481.03
Rotor Arm and O-Ring
Sub Assembly

C8481.07
Rotor Nut



ALUIDS is a well known manufacturer of innovative range of specialty products and accessories for foodservice, commercial plumbing, industrial and Institutional markets. It is part of Krome USA Inc., which has more than 45 years of experience from its parent manufacturing facilities.

Our products rank high in terms of design, innovation and contemporary appeal. We adhere to strict manufacturing standards and our every component is rigorously checked for its performance and endurance by simulating its actual working conditions in our well-equipped world class center.

Limited Warranty - Three Years

ALUIDS extends warranty to its products and parts thereof (except as noted below) against defects in materials or workmanship for a period of three years from the date of original purchase. In this three years time frame, ALUIDS will replace a defective product or part without charge to the customer, provided that the entire product is delivered back to our facility. All transportation and insurance charges for shipping the product to and from ALUIDS must be borne by you.

A complete copy of our Limited Warranty terms and conditions is available upon

Warning

This product can potentially expose you to chemicals including Lead, Nickel, Di(2-ethylhexyl) phthalate (DEHP) which are known to the State of California to cause cancer, birth defects or reproductive harm. For more information go to: www.P65Warnings.ca.gov

KEEP THIS MANUAL FOR FUTURE REFERENCE

Installation Instructions for Waste Valves

CONSULT YOUR LOCAL DEPARTMENT WITH JURISDICTION REGARDING BACKFLOW PREVENTION

Installation Notes :

- Make sure the water supply is closed before beginning.
- Use pipe thread sealant on all threaded joints.
- Be sure the packaging has all the items BEFORE beginning installation. If any of the items are to be missing, contact your supplier.

Tools for Installation :

- 1/8" Allen Wrench
- #3 Allen Wrench
- Channel Lock Pliers
- Spanner Wrench

Steps for installing Valve Body Assembly to Existing Sink :

1. Keep the gasket (C) over the valve body (D).
2. Holding the gasket in place, butt the valve body against the bottom of the sink and tighten the clamping ring (B) into the valve body from inside of the sink with your hand. Note: As followed in usual plumbing practices, you may use a small bead of silicone in between the clamping ring and sink compartment.
3. Tighten the clamping ring using a spanning wrench. Note: the hole in the rotor arm must be facing the front of the sink as shown in Figure 1.
4. Place the handle (F) into the above said hole and attach with screw (E)

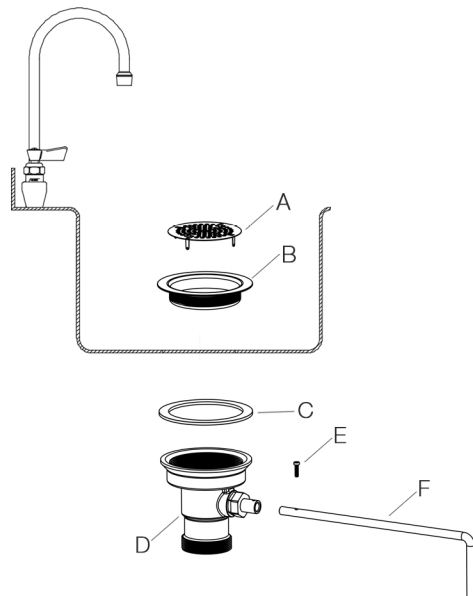


Figure 1

Installation Instructions for Waste Valves

Installation of Strainer

1. Snap in the flat strainer into the clamping ring.
2. Place screw into the strainer's center hole. Now tighten using a 1/8" Allen Wrench

Troubleshooting Notes :

- **To replace Teflon Seals** - To remove strainer, unscrew the retaining nut with a 1" Allen wrench. This contains one of the seals. Pull the ball valve out from top. Remove the lower seal that is now visible. Place new seals and make sure they are snapped firmly into place before reassembling your valve. See Figures 3 and 4.
- **O-ring**- To check this part for wear, first remove the handle, rotor nut and rotor. The small rubber ring in black located on the rotor arm is the O-ring. Important: If while pulling the rotor arm out, the rotor stop is accidentally removed, it must be put back with the tabs in their original position in order to stop the handle in the proper position. See Figure 2
- Be sure the packaging has all the items BEFORE beginning installation. If any of the items are to be missing, contact your supplier.

